

ultraDIGI-1080MZ

Digital Monozoom Microscope Series

FEATURES & BENEFITS

- 01 All-In-One System**
to boost productivity and efficiency of inspection tasks
- 02 Real-Time 1080P HDMI Output**
provides a live view of your sample with no time lag
- 03 Record HD Videos**
at 60 frames per second; ideal for record keeping and quality control
- 04 0.7x - 5.6x Zoom Range**
suitable for viewing a wide range of samples
- 05 Magnetic & Wireless 7500K LED Ring Light**
for a tidy workbench. With polarising option to minimise glare on reflective samples.

AN EXCELLENT DIGITAL MONOZOOM PACKAGE THAT'S IDEAL FOR INSPECTION TASKS

The ultraDIGI-1080MZ delivers maximum productivity and efficiency by combining high resolution live 1080P imaging, still image capture to an SD card and video recording with frame rates of up to 60fps. Its all-in-one design means no PC is required, therefore freeing up bench space.

Boasting a working distance of up to 16cm, the ultraDIGI-1080MZ provides plenty of space for sample manipulation and the use of tools.



APPLICATIONS

Quality control & inspection tasks
PCB & mobile phone assembly
University teaching laboratories
Entomology research
Materials science
Mechanical & electrical engineering

Email us:

sales@gtvision.co.uk

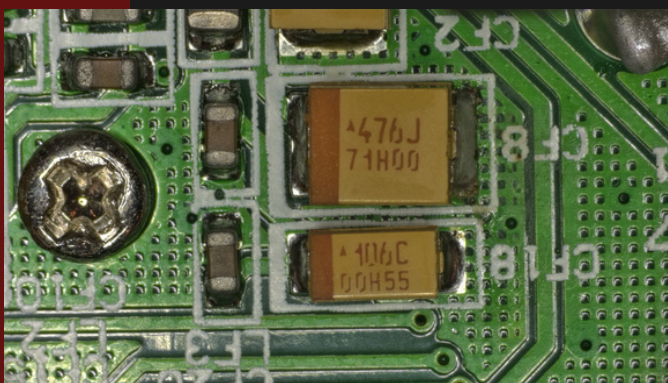
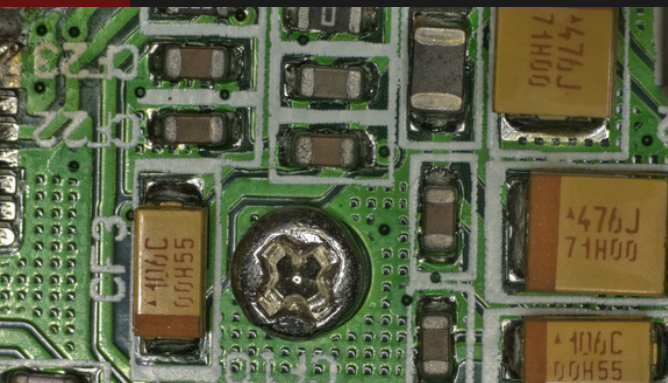
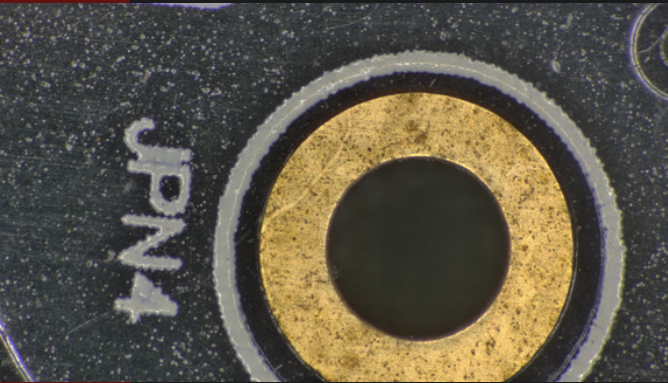
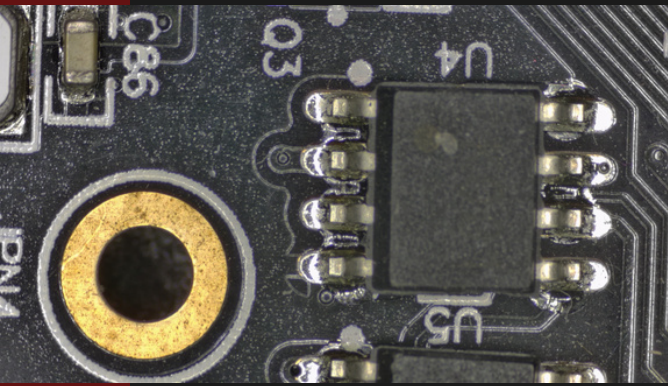
Chat with one of our experts:

+44(0)1284 789697

More information:

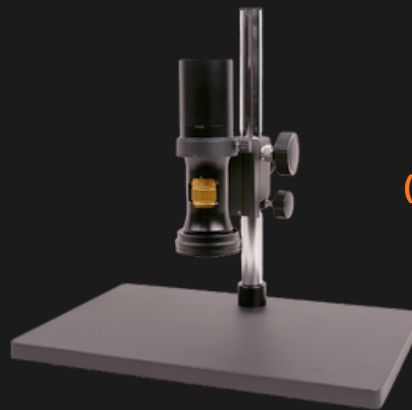
www.gtvision.co.uk

ultraDIGI-1080MZ Digital Monozoom Microscope Series



OPTICAL PARAMETERS	
Zoom Lens	0.7X-5.6X zoom range
Working Distance	37.5mm-160mm (determined by the auxiliary objective)
NA	0.018-0.092 (with W100, 1x auxiliary objective)
Resolution	18.6um-3.65um (with W100, 1x auxiliary objective)
Field of View	0.99mm-34.28mm
Optional Objectives	0.50x, 0.75x, 1.00x, 1.50x, 2.00x
Attaching Other Objective Lenses	Infinite microscope objectives can be attached (both biological microscope objectives and metallurgical microscope objectives can be used) - requires an adapter
Dimensions	188mm x 52mm
Bracket Interface	Standard 50mm

OPTIONS:



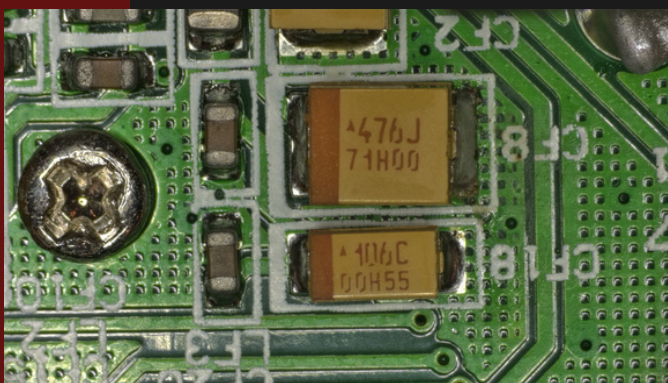
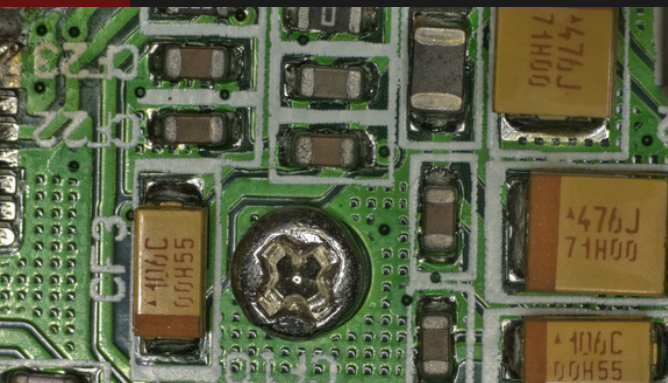
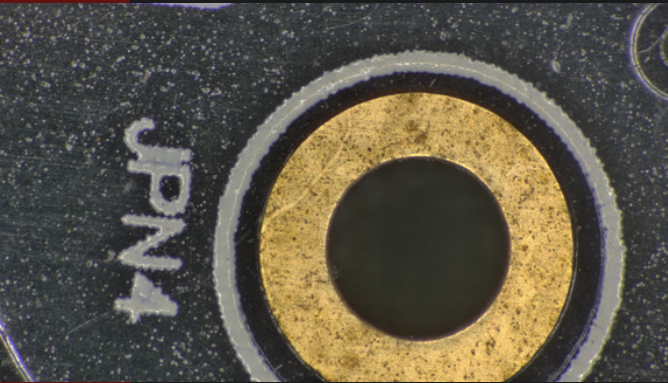
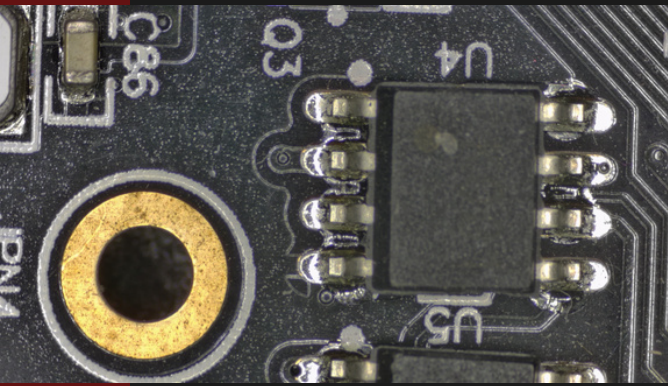
**ultraDIGI-1080MZ
Digital Monozoom
Microscope
(without display screen)**

SHOP NOW



**ultraDIGI-1080MZ
Digital Monozoom
Microscope
(with display screen)**

SHOP NOW



OPTIONAL OBJECTIVE LENS SPECIFICATIONS:

Auxiliary Objective	Specification	TV Lens TV050 for 1/3" Sensor	
		Low	High
W100, 1.0X(80mm WD)	PMAG	0.35X~2.80X	
	FOV	17.14mm	2.14mm
	NA	0.018	0.092
W050, 0.5X(160mm WD)	PMAG	0.18X~1.40X	
	FOV	34.28mm	4.28mm
	NA	0.009	0.046
W075, 0.75X(105mm WD)	PMAG	0.26X~2.10X	
	FOV	20.81mm	2.86mm
	NA	0.013	0.069
W150, 1.5X(51.5mm WD)	PMAG	0.53X~4.20X	
	FOV	11.43mm	1.43mm
	NA	0.026	0.138
W200, 2.0X(37.5mm WD)	PMAG	0.70X~5.60X	
	FOV	8.57mm	1.07mm
	NA	0.035	0.182
Please Note:	When using coaxial lighting, vignetting may occur at low magnifications. When using other infinity objectives (adapter available), the PMAG, FOV and NA of the UltraDIGI-1080MZ series depends on the parameters of the objectives.		

WD: Working Distance

NA: Numerical Aperture

PMAG: Primary Magnification

FOV: Field of View

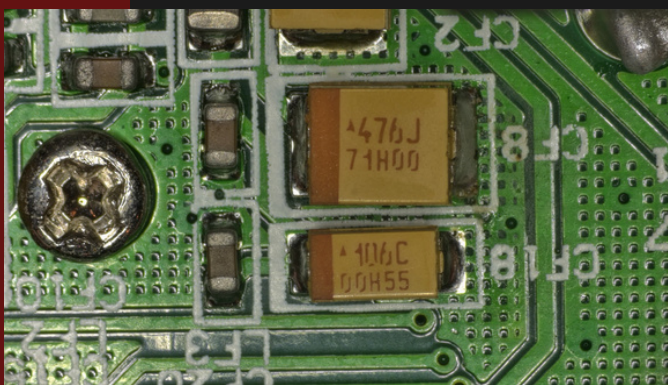
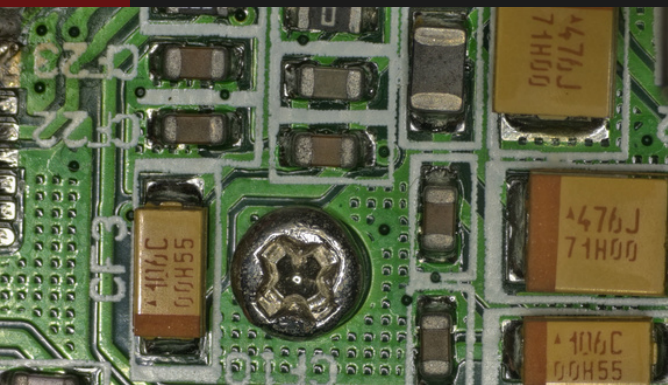
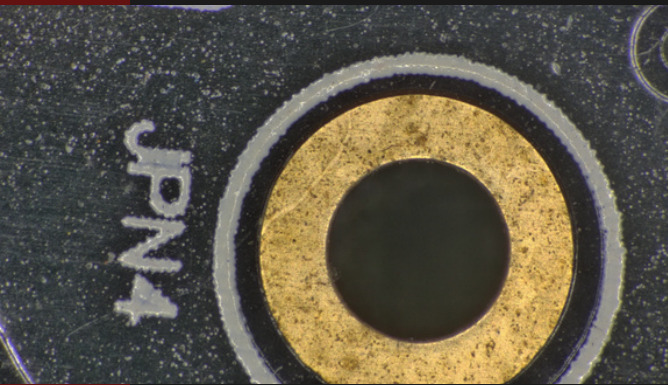
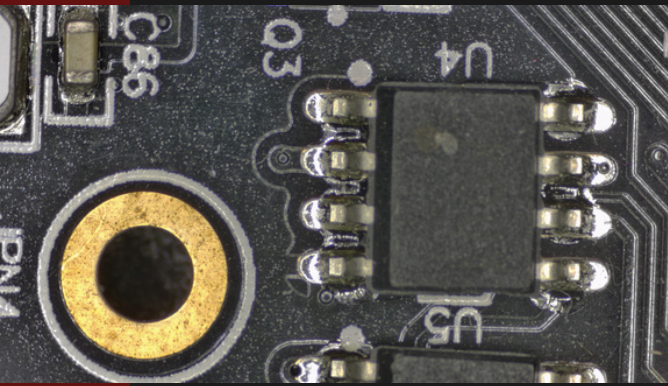
Please Note: Infinity corrected objectives limit the system's useable zoom range due to uneven illumination. The maximum sensor format is 2/3".

LIGHTING MODULE

LED Ring Light	LED direct ring light with adjustable brightness (wireless)
Optional LED Polarising Ring Light	LED polarising direct ring light with adjustable brightness (wireless)
Optional Coaxial Light Module	LED Coaxial Light Module with adjustable brightness (wireless)
Power Supply	Integrated wireless power supply
Brightness Control	Through the 3-way multi-function adjusting wheel or software GUI, both the hardware and software can adjust the light intensity.

ultraDIGI-1080MZ Digital Monozoom Microscope Series

DISPLAY CAMERA SPECIFICATIONS:



HDMI Interface Digital Camera Modular	
Interface and Button	Function Description
HDMI	Complies with HDMI 1.4 standard. 1080P format video output for standard FHD monitor
LED	LED status indicator
USB Mouse	Connect USB mouse for easy operation with embedded XCamView software
DC12V	Power adapter connection (12V/1A);
SD	Complies with SDIO3.0 standard and an SD card can be inserted for video and image storage;
Camera Hardware	Function Description
HDMI 1080P Camera	Complies with HDMI 1.4 standard; 60fps@1080P
Sensor	Sony IMX307(C), 1/2.8"(5.57x3.13), Pixel size 2.9x2.9um
Sensitivity	1300mv with 1/30s
FPS/Resolution	60@1920*1080(HDMI)
Exposure Time	0.01~1000ms
XCAMView Software Ctrl	Function Description
Video Saving	Video format: 2M(1920*1080) H264 encoded MP4 file; Video saving frame rate: 50~60fps (related with SD card performance);
Image Capture	2M (1920*1080) JPEG image in SD card
Measurement Saving	Measurement information saved in a different layer with image content; Measurement information is saved together with image content in burn in mode.
ISP Function	Exposure(Automatic / Manual Exposure) / Gain, White Balance(Manual / Automatic / ROI Mode), Sharpening, 3D Denoise, Saturation Adjustment, Contrast Adjustment, Brightness Adjustment, Gamma Adjustment, Color to Gray, 50HZ/60HZ Anti-flicker Function
Image Operations	Zoom In/Zoom Out, Mirror/Flip, Freeze, Cross Line, Overlay, Embedded Files Browser, Video Playback, Measurement Function
Restore Factory Settings	Restore camera parameters to its factory status
Multiple Language Support	English / Simplified Chinese / Traditional Chinese / Korean / Thai / French / German / Japanese / Italian / Russian
LIGHTING MODULE	
LED Ring Light	LED direct ring light with adjustable brightness (wireless)
Optional LED Polarising Ring Light	LED polarising direct ring light with adjustable brightness (wireless)
Optional Coaxial Light Module	LED Coaxial Light Module with adjustable brightness (wireless)
Power Supply	Integrated wireless power supply
Brightness Control	Through the 3-way multi-function adjusting wheel or software GUI, both the hardware and software can adjust the light intensity.



Email us:
sales@gtvision.co.uk

More information:
www.gtvision.co.uk